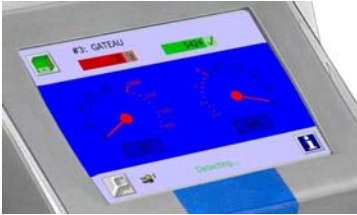




IQ³⁺ Metal Detector Search Heads

www.loma.com

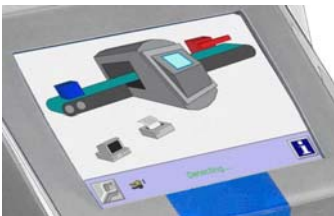
Adaptable and tough, variable frequency metal detection systems for the food and packaging industries, with full colour graphical touch screen



Operator screen with Performance Validation countdown timer, which assists in HACCP compliance



Context Sensitive help screens, ensures compliance with internal quality standards for testing and validation



Icon Driven Menus simply touch the relevant Icon for set up or adjustment



- **Adaptable** True multi-frequency detection adapts to new product and packaging in seconds
- **Easy to use** Automatic product learn ensures maximum sensitivity without adjustment
- **Stable** Unique case and coil geometry delivers unsurpassed levels of immunity
- **Flexible** Multiple product memories for rapid product change over and data storage
- **Tough** NEMA PW12 environmental protection

Metal Detection

X-ray Inspection

Checkweighers

Data Capture

Designed to Survive



Metal Detector Search Heads

Finish:	304 stainless steel with bead blast finish	
Supply Voltages:	100, 120, 200, 220, 230, 240V AC 50/60Hz	
Power Consumption:	20VA	
Temperature Range:	-10°C to +40°C (14°F to 104°F)	
Humidity:	0 to 95% Relative Humidity (non-condensing)	
Reject Options:	Air Blast single or twin, Pusher others to order	
Environment:	NEMA PW12 NEMA PW12 Ultra Harsh	Blue Head MAX
Options:	Beacon stanchion Reject confirm LomaEnet Serial link PVS (Performance Validation System)	Keyboard cover Bin full Ethernet Remote reports

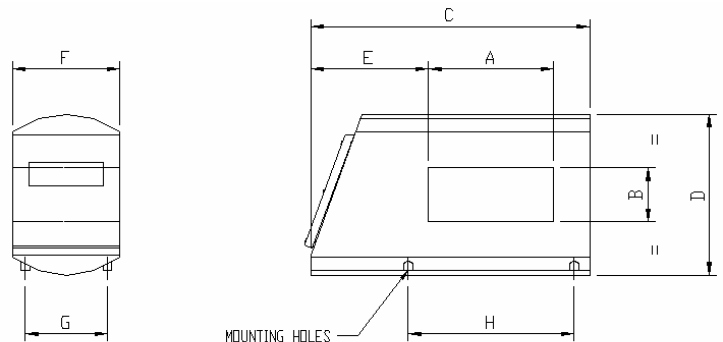
Technical Specification

- Unique clam-shell design case and coil geometry
- Bifurcated and totally uniform product screen
- Upgradeable metal detector controls
- True multi-frequency, standard operating range from 40 to 900KHz
- Performance Validation System (PVS) to aid HACCP compliance
- Various communication options to suit plant integration protocols
- 32-bit digital signal processing for enhanced contaminant detection
- Standard apertures on rapid delivery

Height
3" (75mm) to 30" (775mm)

Width
4" (100mm) to 78" (2000mm)

*Other aperture sizes available



DIMENSION A = APERTURE WIDTH
DIMENSION B = APERTURE HEIGHT

B	3' - 4'	5' - 6'	7' - 10'	11' - 14'	15' - 18'	19' - 22'	23' - 26'	27' - 30'
C	A+17'	A+17'	A+17'	A+21'	A+25'	A+29'	A+33'	A+37'
D	17'	B+12'	B+12'	B+16'	B+20'	B+24'	B+28'	B+32'
E	13'	13'	13'	15'	17'	19'	21'	23'
F	12'	12'	16'	20'	24'	28'	32'	40'
G	9'	9'	13'	17'	21'	25'	29'	37'
H	A+4.5'	A+4.5'	A+4.5'	A+4.5'	A+4.5'	A+4.5'	A+4.5'	A+4.5'

USA — Loma Systems Inc, 283 East Lies Road, Carol Stream, IL 60188
Canada — Loma Canada, 333 Wycroft Road, Unit 11, Oakville, Ontario, L6K 2H2

Tel: 1-800-USA-LOMA
Tel: (905) 842 4581

Fax: (630) 588-0900
Fax: (905) 842 3460

Email: sales@loma.com
Email: lomacanada@loma.com