



OPC Data Capture Systems

www.loma.com

Flexible Data Capture System to compliment our range of inspection equipment



- **Versatile** OPC compliance allows interfacing to central data collection hub
- **Easy to use** User friendly, allows formulation via standard software
- **Rapid Payback** Quickly identify give-away and control process
- **Flexible** Easily connect existing Loma equipment onto the network
- **Efficient** Access all Loma equipment from a central computer
- **Multi-lingual** Available in English, French, Dutch, Czech, Polish, German, Italian & Chinese

Metal Detection

X-ray Inspection

Checkweighers

Data Capture

Designed to Survive

Data Capture Systems

Requirements

Cable: Standard CAT5
 PC: Networked - 2GHz, 2Gb RAM
 Operating System: Windows XP, Win Server 2003

To enable logging of report data Microsoft SQL Server Express is needed

Number of devices: ≤ 50
 Maximum cable length: Network limited

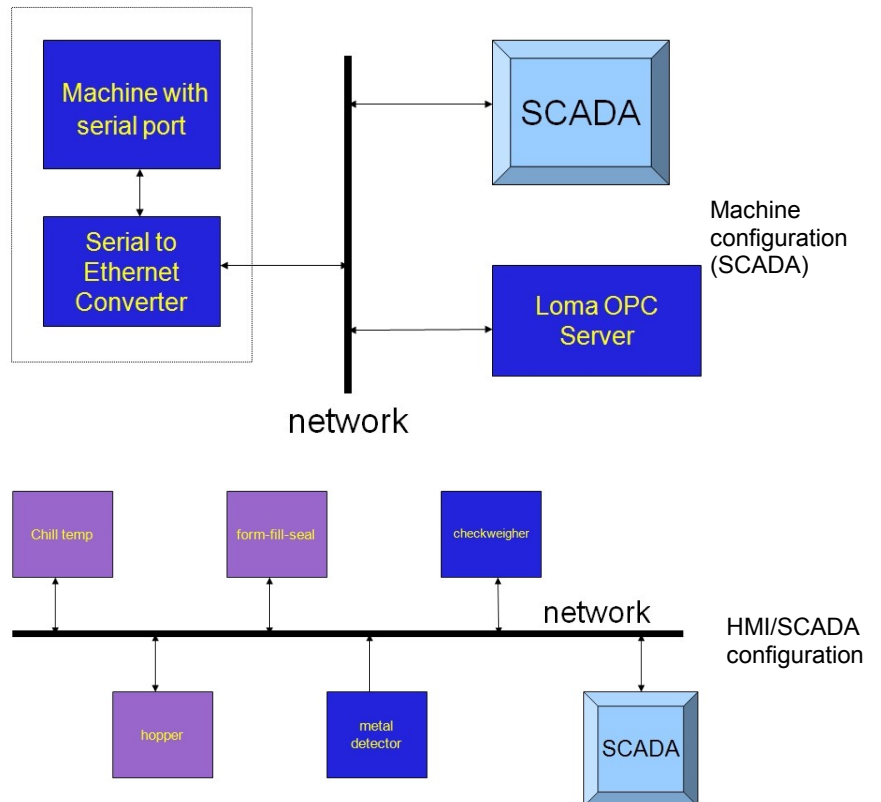
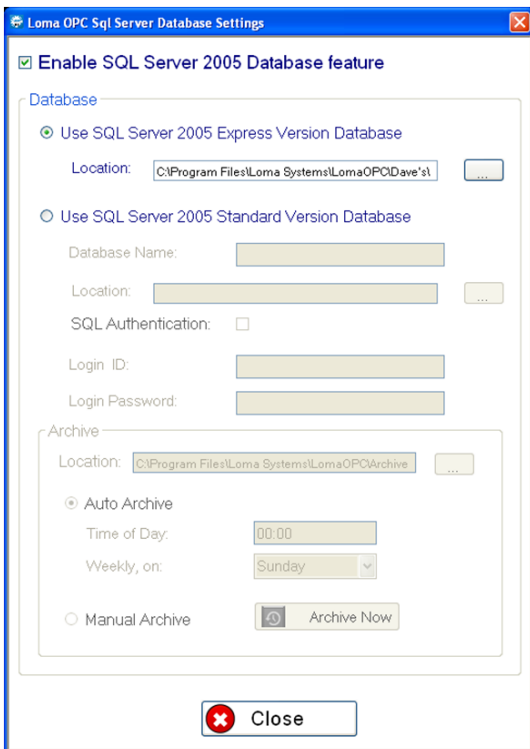
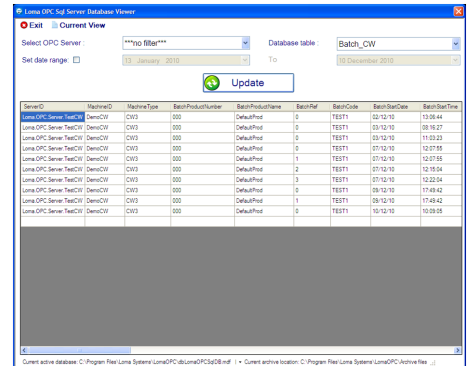
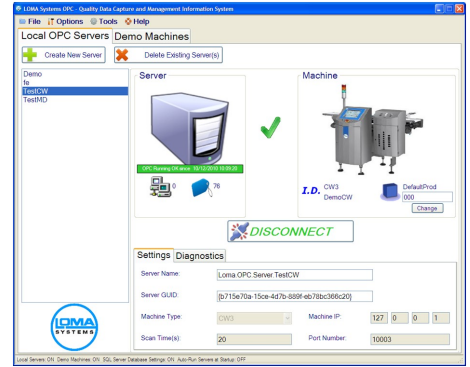
Device compatibility: Metal Detectors - IQ³, IQ³⁺ and IQ²
 Checkweighers - CW³ AS, LCW, CS4000
 X-ray Systems - X⁴

Device hardware: Not required on X⁴, CW³, and IQ³⁺
 Required: LCW, CS4000, AS, IQ³ and IQ³

Language: Multi-language support—English, French, Dutch, Czech, Polish, German, Italian & Chinese

Requirement: To enable logging of report data Microsoft SQL Server Express is needed

Data availability: Dynamic tags are available from the OPC server which can be used by SCADA and other third party systems



USA — Loma Systems, 283 East Lies Road, Carol Stream, IL 60188
 Canada — Loma Canada, 333 Wyecroft Road, Unit 11, Oakville, Ontario, L6K 2H2

Tel: 1-800-USA-LOMA
 Tel: (905) 842 4581

Fax: (630) 588-0900
 Fax: (905) 842 3460

Email: sales@loma.com
 Email: lomacanada@loma.com