



X⁴ Bulk X-ray Inspection Systems

www.loma.com

Versatile, proven X-ray detection for the food and packaging industries



- **Versatile** Models and reject systems to suite a wide range of packaged product
- **Easy to use** Intuitive full color touch-screen
- **Sensitive** Auto calibration, which requires no programming and maximizes performance
- **Fast** Throughput in excess of 10T/hr without loss in performance
- **Reliable** Heavy duty conveyor components, built for 24/7 operation

Metal Detection

X-ray Inspection

Checkweighers

Data Capture

Designed to Survive



X-ray Inspection Systems

Finish: 304 stainless steel with bead blast finish

Typical Line Height: 900mm ± 50mm 35" ± 2"

System Length: 2000mm 80"

Belt Width: 300/500mm 12/20"

Supply Voltages: 230/1ph/50Hz N+E or 110/1ph/60Hz N+E

Air Supply: 5 to 8 bar 80 to 100 psi

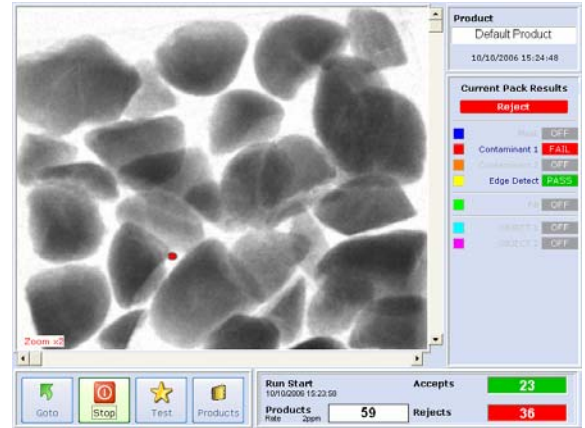
Reject Options: Single or Multilane lift or drop flap

Environment: IP 55/66 NEMA 12/4X

Belt Type: Flat (food quality) belt

Standard Inclusions: Quick release belt, Height adjustable feet, Image and report archiving, Hinged interlocked covers, Variable speed

Options: Reject confirmation, Bin full sensing, Reject bin, Survey meter, Remote diagnostics, Lockable wheels, LomaEnet, Modem



Technical Specification

- Upgradeable Display mounted Industrial Grade PC with modem and network card
- Large and expandable Hard Drive, Windows XP operating system
- Digitally controlled WASC (Wide Angle, Self Cooled) high performance X-ray tank. (Tube life estimated at 7 to 10 years)
- Unique USB high speed, high stability, temperature compensated detector array with 0.8mm diode pitch. Scan rate of 2000s/sec
- Computer vision system utilising image processing and morphological techniques
- Pass Key protected set-up
- Ethernet ready
- USB Report and image archiving
- Full diagnostic and system health monitoring with date and time stamp archiving
- Usage monitoring with planned maintenance prompts
- QA test event logging
- Modem support capability

USA — Loma Systems Inc, 283 East Lies Road, Carol Stream, IL 60188
Canada — Loma Canada, 333 Wyecroft Road, Unit 11, Oakville, Ontario, L6K 2H2

Tel: 1-800-USA-LOMA
Tel: (905) 842 4581

Fax: (630) 588-0900
Fax: (905) 842 3460

Email: sales@loma.com
Email: lomacanada@loma.com