



X⁴ SpaceSaver X-ray Inspection Systems

www.loma.com

Versatile, proven X-ray detection for the food and packaging industries



- **Versatile** Models and reject systems to suit a wide range of packaged product
- **Easy to use** Intuitive full color touch-screen
- **Sensitive** High performance, auto configuring contaminant detection algorithms
- **Fast** Belt speeds up to 96 m/min (315 ft/min) with optimum performance
- **Reliable** Heavy duty conveyor components, built for 24/7 operation

Metal Detection

X-ray Inspection

Checkweighers

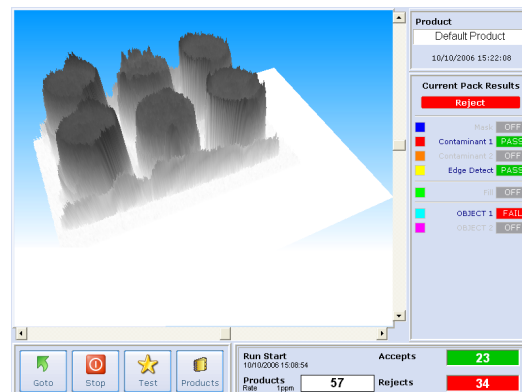
Data Capture

Designed to Survive



X⁴ SpaceSaver X-ray Inspection Systems

Finish:	304 stainless steel with bead blast finish	
Typical Line Height:	900mm ± 50mm	35" ± 2"
System Length:	1150mm	45"
Belt Width:	300/500mm	12/20"
Supply Voltages:	230/1ph/50Hz N+E or 110/1ph/60Hz N+E	
Air Supply:	5 to 8 bar	80 to 100 psi
Reject Options:	Signal only	
Environment:	IP 55	NEMA 12
Belt Type:	Flat (food quality) belt	
Standard Inclusions:	Height adjustable feet, Missing product, Image and report archiving, Hinged interlocked covers, Variable speed	
Options:	Reject confirmation, Bin full sensing, Survey meter, Remote diagnostics, Lockable wheels, LomaEnet	



Technical Specification

Industrial Grade PC with modem, Ethernet and front access USB port

Embedded Windows XP operating system

Digitally controlled WASC (Wide Angle, Self Cooled) high performance X-ray tank. (Tube life estimated at 7 to 10 years)

Unique USB high speed, high stability, detector array with 0.8mm diode pitch.

Computer vision system utilising image processing and morphological techniques

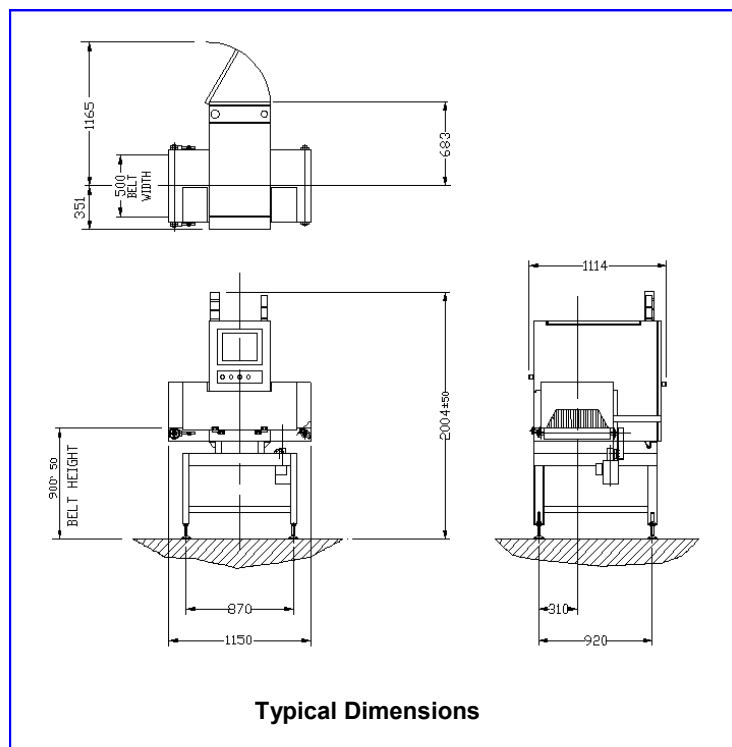
Pass Key protected set-up

USB Report and image archiving

Full diagnostic and system health monitoring with date and time stamp archiving, including remote support tools

Usage monitoring with planned maintenance prompts

Modular system with speed digital communications between major components



USA — Loma Systems, 283 East Lies Road, Carol Stream, IL 60188
Canada — Loma Canada, 333 Wycroft Road, Unit 11, Oakville, Ontario, L6K 2H2

Tel: 1-800-USA-LOMA
Tel: (905) 842 4581

Fax: (630) 588-0900
Fax: (905) 842 3460

Email: sales@loma.com
Email: lomacanada@loma.com