



## *X<sup>4</sup> SideShoot X-ray Inspection Systems*

*www.loma.com*

Versatile, proven X-ray detection for the food and packaging industries



- **Versatile** Models and reject systems to suite a wide range of packaged product
- **Easy to use** Intuitive full colour touch-screen
- **Sensitive** High performance, auto configuring contaminant detection algorithms
- **Fast** Capable of pack rates in excess of 600ppm
- **Reliable** Heavy duty conveyor components, built for 24/7 operation

Metal Detection

X-ray Inspection

Checkweighers

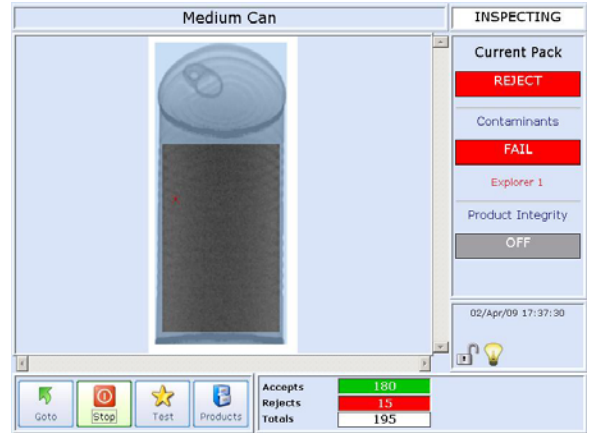
Data Capture

*Designed to Survive*



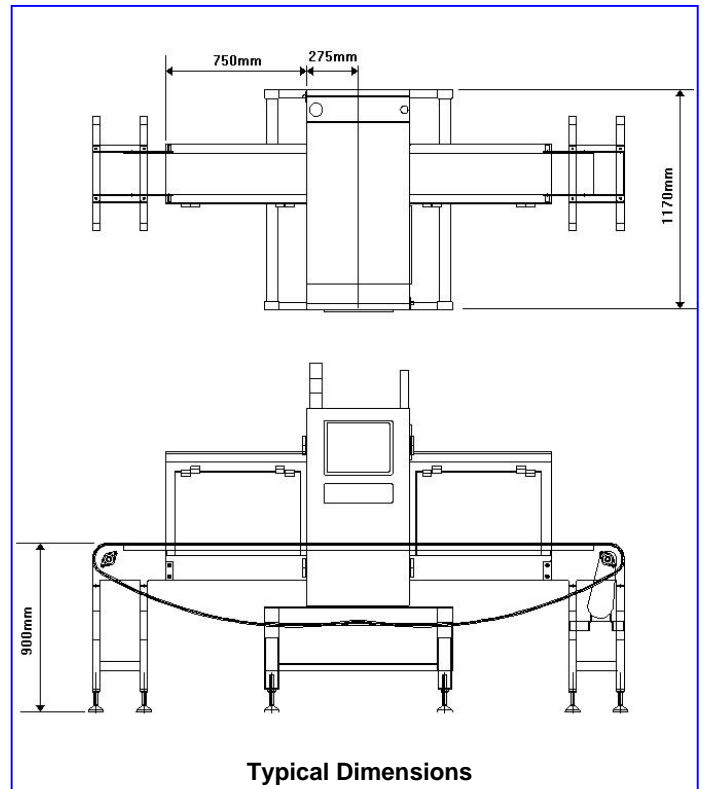
# X-ray Inspection Systems

- Finish: 304 stainless steel with bead blast finish
- Typical Line Height: 900mm  $\pm$  50mm
- System Length: 2830mm
- Belt Width: 200mm
- Supply Voltages: 230/1ph/50Hz N+E or 110/1ph/60Hz N+E
- Air Supply: 5 to 8 bar
- Reject Options: Signal only
- Environment: IP 55
- Belt Type: Modular
- Standard Inclusions: Height adjustable feet, Image and report archiving, Hinged interlocked covers, Variable speed
- Options: Reject confirmation, Bin full sensing, Survey meter, Remote diagnostics, Lockable wheels, LomaEnet, IP66 washdown



## Technical Specification

- Industrial Grade PC with modem, Ethernet and front access USB
- Windows XP operating system
- Digitally controlled WASC (Wide Angle, Self Cooled) high performance X-ray tank (Tube life estimated at 7 to 10 years)
- Unique USB high speed, high stability, detector array with 0.8mm diode pitch
- Computer vision system utilising image processing and morphological techniques
- Pass Key protected set-up
- USB Report and image archiving
- Full diagnostic and system health monitoring with date and time stamp archiving, Including remote support tools
- Usage monitoring with planned maintenance prompts
- Modular system with high speed digital communications between major components



Loma Systems, Summit Ave, Southwood, Farnborough, Hampshire, GU14 0NY

**Tel:** +44 (0)1252 893300

**Fax:** +44 (0)1252 513322

**Email:** sales@loma.co.uk

*Designed to Survive*